



AMORET TRADING 68
LEADING THE WAY IN HEALTHCARE PRODUCTS

The background of the entire page is a photograph of a dental clinic, overlaid with a semi-transparent teal color. The image shows dental equipment, including a white dental chair with a control panel, a dental unit with various handpieces, and a dental sink in the foreground. The text 'DENTAL EQUIPMENT' is centered over the image in a white, sans-serif font.

DENTAL EQUIPMENT

WWW.AMORET.CO.ZA

CONTACT DETAILS

TEL 013 244 2119
FAX 086 528 7895
CELL 072 446 4043

STEFUS@AMORET.CO.ZA

3 BOSBERG CRESCENT,
AERORAND, MIDDELBURG,
MPUMALANGA, SOUTH AFRICA

POSTNET SUITE MW177
PRIVATE BAG X1838
MIDDELBURG, 1050

WWW.AMORET.CO.ZA



AMORET TRADING 68
LEADING THE WAY IN HEALTHCARE PRODUCTS

INDEX

Amalgamator	1
Burs	1
Compressors	2
Curing lights	2
Delivery units	3
Dental chairs	4
Endo Files	6
Endo motors	6
Handpieces	7
Scalers & Sterilizing equipment	7
Suction units	8
X-ray & Imaging equipment	9

AMALGAMATOR

AMORET TRADING 68
LEADING THE WAY IN HEALTHCARE PRODUCTS



Glows Amalgamator

- Easy to use
- Adjustable capsule holding mechanism



DB- 338 Amalgamator

- Controlled by a microprocessor,
- Ensures a precise, controlled, consistent mix.

BURS



COMPRESSORS



AMORET TRADING 68
LEADING THE WAY IN HEALTHCARE PRODUCTS



24 Litre Oil Free Silent Compressor

- Tank Capacity: 24L
- Motor Capacity: 0.55kW /3/4HP
- 1380RPM
- 230V/50Hz/16A
- Maximum Pressure: 101PSI (7 Bar)
- Free Air Delivery @ 600Kpa (6 Bar): 50L/min



50 Litre Oil Free Silent Compressor

- Tank Capacity: 50L
- Motor Capacity: 0.75kW x 2 /1HP
- 1380RPM
- 230V/50Hz/16A
- Maximum Pressure: 101PSI (7 Bar)
- Free Air Delivery @ 600Kpa (6 Bar): 150L/min

CURING LIGHTS



Denjoy 400-6 Single

- Cordless with docking station and charging cable
- Automatic turn-off function for power saving



DTE LUX 1

- 220° head rotation
- Easy to change battery
- Automatic memory
- Stable output of light intensity
- A full charge can be used more than 400 times continuously under 10 seconds working time



AMORET TRADING 68
LEADING THE WAY IN HEALTHCARE PRODUCTS



ILED Curing Light

- Light has 2 programs.
- Programme 1: (P1): emits a light intensity of 2300mW/cm² to 2500mW/cm² 1 or 3 second curing times.
- Programme 2: (P2): emits an intensity of 1000mW/cm² to 1200mW/cm² 5, 10, 15, or 20 second curing time.
- The light tip is protected in a full hard plastic encasing
- Fully rotatable and detachable light tip for easy replacement.

DELIVERY UNITS



DU892 Mobile/Portable Delivery Unit

- Voltage/Hz: 100-240V
- Power: 0.55KW
- Air flow: 40L/min
- Tank: 5L
- Net weight: 26kg
- Noise level: ≤60dB(A)
- Dimensions: 450*310*680mm
- Standard features:
- 3-way syringe
- Saliva ejector
- Compressor
- Handpiece tubings



DynAir Mobile Delivery Unit

- 2 x Handpiece tubing
- 3-Way syringe
- Saliva ejector system – low volume
- Clean water system
- Oil free compressor



AMORET TRADING 68
LEADING THE WAY IN HEALTHCARE PRODUCTS



DCI Delivery Unit

- 3 Way syringe
- 2 handpiece manual control unit
- Quick connection
- Water system with 2lt bottle
- Mobile dental cabinet
- Compressor

DENTAL CHAIRS



Dental chair only

- Simple type dental chair



Anle AL-398 AA

- 4-Hole handpiece tubing
- Upholstery: PU leather
- Glass spittoon
- Operating light
- X-ray film viewer
- Saliva ejector system
- 3-Way syringe
- Multi-function foot control pedal
- Clean water system
- Doctor's stool
- Built in junction box



AMORET TRADING 68
PIONEERING THE WAY IN HEALTHCARE PRODUCTS

AL-398 HG



- 4-Hole handpiece tubing
- Upholstery: leather
- 9 memory positions
- Rotatable glass spittoon
- LED operating light
- X-ray viewer
- Saliva ejector system
- 3-Way syringe
- Multi-function foot control pedal
- Clean water system
- Built in junction box
- Doctor's stool
- Built in curing light
- Built in scaler

MZ2200 Dental Chair & Sensor light only



Doctor's & Assistant's Stool

- Good quality

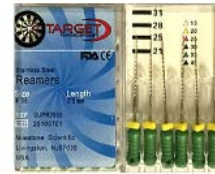


ENDO FILES



AMORET TRADING 68
LEADING THE WAY IN HEALTHCARE PRODUCTS

REAMERS



K-FILES



ENDO MOTOR

Denjoy Endo Motor JoySmart

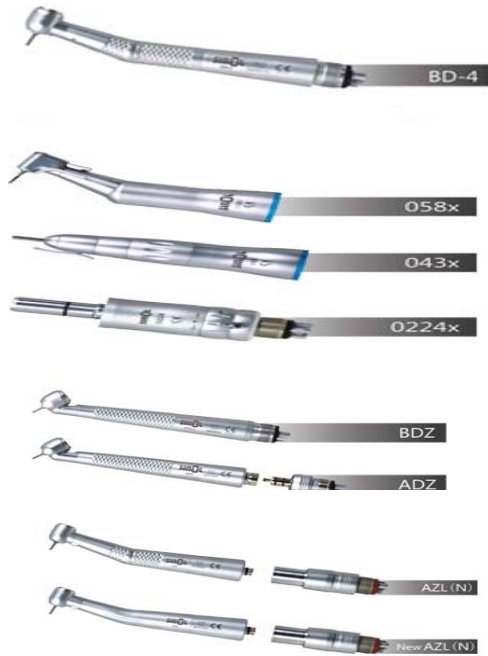


- Apex locator function and endo motor function can be used together or separately
- Brushless
- Contra-angle
- Speed range: 100 - 650 r/min
- Adjustable torque range
- Apex locator included
- LCD to make operation easier
- In the process of root canal treatment, when the file reaches the apex, the unit will stop working automatically

HANDPIECES



AMORET TRADING 68
LEADING THE WAY IN HEALTHCARE PRODUCTS



Series B High Speed Handpiece

- Push button

Slow Handpiece

- Contra-angle
- Straight
- Air motor

Contra-angle Handpiece

- Mainly used for posterior tooth preparations

Fiber Optic High Speed Handpiece

- Push button
- 3 Points water spray

SCALERS



Woodpecker Scaler DTE-D5

- High quality scaler unit
- General, periodontic and endodontic functions
- Control unit plus high quality handpiece and pedal
- Torque wrench for tightening on and removal of scaler tips, therefore no damage to the handpiece
- Comes with 5 scaler tips plus 1 endo chuck for NiTi files



NSK Surgic AP Surgical Unit

- Control Unit • Non-Optic Micromotor (SG50MS)
- SG20 Handpiece (20:1 Reduction)
- FC-55 Foot Control (IPX8 certified)
- Handpiece Stand
- Irrigation Tube (5 pcs.) and Other Accessories



STERILIZING EQUIPMENT

Automatic Sterilizer SA-232



- European Class N standard
- Capacity: 16 litre
- Overall dimensions: 600mm x 335mm x 430mm
- Gross weight: 15.5kg
- Power supply: 230V/50~60Hz or 110V/50~60Hz
- Power consumption: 230V/7amp heater 1 400W
- Sterilizing temperature: 122°C
- For wrapped and unwrapped solid instruments

Sturdy 232X



- European Class N standard
- Capacity: 16 litre
- Chamber size: 230mm x 410mm
- Overall dimensions: 501mm(W) x 406mm(H) x 537mm(D)
- Power consumption: 220V - 240V / 1.4KW (max) /7A
- Sterilizing temperature: 140°C
- Safety devices: overheat (low water) cut-off switch, safety valve, release valve, emergency exhaust valve, door safety holder and pressure control switch
- For wrapped and unwrapped solid instruments

Runyes 12L / 22L



- European Class B standard
- 3 times vacuum preceding vacuum drying
- Residual humidity: <0.2%
- Vacuum measurement reaches -0.70bar
- Sterilizing temperature: 121°C - 134°C
- Water steam reaches every corner
- It measures the penetration of water steam (installed with Bowie & Dick test)
- For wrapped and unwrapped, solid and hollow instruments



AMORET TRADING 68
LEADING THE WAY IN HEALTHCARE PRODUCTS



Water Distiller AC-B15

- Voltage: 220V
- Frequency: 50Hz
- Distiller water: 1.5 litre / hour
- Chamber size: 180mm x 200mm
- Outside size: 290mm x 290mm x 390mm
- Weight: 3.5kg

SUCTION UNITS



DS3701M Portable Dental Suction

- Input Power 370VA
- Pump Flow: 360L/min
- Complete Unit Negative Pressure: - 11KPa Max.
Flow: 60m³/h
- Net Weight: 26.5kgs
- Dimension: 410*360*790mm



4TEK Suction – Wet Suction Unit

- 1hp
- 2hp



Cattani PAL 14/38 Suction Unit

- 1hp
- 2hp



AMORET TRADING 68
LEADING THE WAY IN HEALTHCARE PRODUCTS



Cattani Aspi-Jet 6 – Mobile Dry Suction

- Aspi-Jet requires no special plants systems;
- it can be easily moved around the chair and from one surgery to another;
- in case of failure of the centralized system, it allows to continue working;
- Aspi-Jet is meant for continuous service.

Canister to be emptied manually, capacity 4 litres.

Sound pressure level 65 dB (A).

W= 500 mm D= 350 mm H= 760 mm.

Net Weight= 32 kg Gross Weight= 41 kg.t

X-RAY & IMAGING EQUIPMENT



HDR 500/600 Intraoral Sensor

- Exceptional image quality at low dose
- Extremely robust design



Supervista HDI-210 Intraoral Camera

- Sensor 1/4"1.22Mega Pixel CMOS
- Pixels 1280*1024
- Angle of View 90°
- Frame Rate Max 15fps@over640*480~up to 1280*1024
- Illumination 6 LEDS With High Luminance
- Host Interface USB 2.0
- Handpiece Cable 2.5M
- Focus 5mm~35mm
- Operation System Window 2000/XP/Vista/Win 7/Win 8(32bit &64bit)



FONA XDG Interoral X-ray

- Excellent image quality
- Ergonomic positioning
- Easy to use control panel



Our services to you as Dental Practitioner:

Equipment service, repair and maintenance

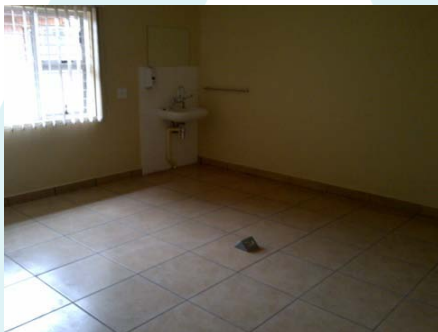
All major assets benefit from regular servicing and access to on-call troubleshooting, your practice equipment is no different. Amoret service department undertakes regular servicing of all major equipment, with most practices undertaking specialised service programs that keep track of all major services and maintenance for each individual piece of equipment. Troubleshooting and repair services are also offered with fast response times in the Mpumalanga area and regular visits to regional areas.

Installation of new equipment

Amoret will install all dental equipment according to the client's specifications. Surgery planning and layout is another service that we offer to our clients.

The following pictures are some of our previous projects that we have completed:

Before



After





AMORET TRADING 68
LEADING THE WAY IN HEALTHCARE PRODUCTS

Before



After



Before



After



Un-installation, installation, relocation & transportation

Whether you are renovating your surgery, relocating or just want equipment moved, Amoret can take care of this all for you. Our experienced technicians are familiar with most major brands of equipment and have specialised transportation equipment to make sure your precious equipment arrives and works at its new destination just the way it did before it was removed.

Equipment Refurbishment

We refurbish and upholster dental equipment.

Before



After



CONTACT DETAILS

TEL 013 244 2119
FAX 086 528 7895
CELL 072 446 4043

STEFUS@AMORET.CO.ZA

3 BOSBERG CRESCENT,
AERORAND, MIDDELBURG,
MPUMALANGA, SOUTH AFRICA

POSTNET SUITE MW177
PRIVATE BAG X1838
MIDDELBURG, 1050

WWW.AMORET.CO.ZA



AMORET TRADING 68
LEADING THE WAY IN HEALTHCARE PRODUCTS